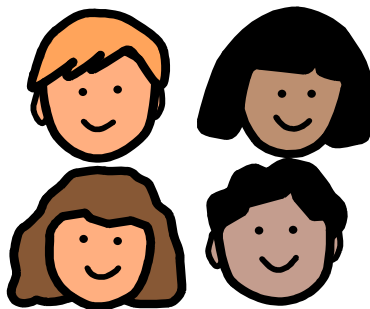


Early Years Foundation Stage/Explorers Butterflies Autumn Term 2024

Communication and Language, Literacy Development

Comprehension: To listen to stories and rhymes (Going on a Bear Hunt & Where's Lenny), **pre phonics** curriculum e.g rhymes, environmental sounds, music and joint attention activities **C & L** To develop listening and attention skills. through group work (bucket therapy, intensive interaction), play in all areas of learning (indoor and outdoors). To listen to rhymes connected to topic, to experience communication boards. To develop **making mark** skills using a variety of stimulating media such as sand, foam brushes in water, sticks and leaves in puddles and chalk.

All about me/my senses.



Mathematics Development

Number: To enjoy and experience number rhymes and activities such as counting body actions **Numerical Pattern:** To react to changes of amount, filling and emptying containers during sensory play. To listen to adults count in everyday contexts, recite/recall numbers 1-20. Build with a range of resources including junk modelling. experience items of size, height or weight. To develop an understanding of the daily routine. Notice patterns in nature and start to notice patterns, shape and colours. Activities to take place during free choice play, group sessions, workstations, outdoor areas, light room, hall and the soft play room.

Understanding of the World

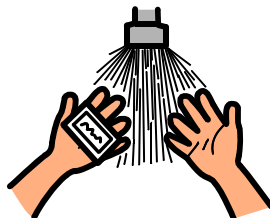
People, culture and community: Developing curiosity about their class friends and the adults they meet during their day. **Past and present:** Learn about similarities and differences between things in the past and present and to take part in celebrations/festivals. **The natural world** Explores materials with different properties linked to the current topic using their senses such as sounds, smell, touch or taste. This is to be carried out in the indoors and outdoors areas. To notice some important processes and changes in nature and properties. Learn how to operate simple ICT equipment.

Expressive Arts and Design

Creating with materials: To explore and experiment with a range of media using all their senses to investigate them and manipulate them and play with them developing their interest and imagination. **Being imaginative and expressive.** Explore and show an interest in the way musical instruments sound, use senses and whole body during music sessions. Use songs that the children are interested in and introduce celebrations and festival songs. Explore dressing up materials and party/celebration items. Use small world equipment to develop role play and imagination skills. Use puppets and masks during action songs. Use a variety of construction materials developing fine motor skills.

Physical Development

Gross Motor: To develop gross and fine motor through sensory exploration and developing strength, co-ordination and positional awareness through creative movement, dance and by exploring the gross motor equipment in the various indoor and outdoor areas of the school. **Fine Motor:** To use simple tools safely in play dough, developing hand eye co-ordination. **Self help:** Begin to recognise and communicate hunger, thirst and discomfort. To start the early stages of a toilet routine. To learn the importance of keeping healthy and developing independence skills.



Personal, Social and Emotional Development

Self Regulation: To support children to manage emotions and develop a positive sense of self and confidence. To persist and wait for what they want. **Managing Self:** Adults will model and guide them to learn how to look after their bodies, including healthy eating and managing personal needs. Learn about being friends. **Building relationships:** Start to build relationships with adults and children in their class and starting to understand boundaries and rules. Learn how to ask for help and take turns with friends.

