

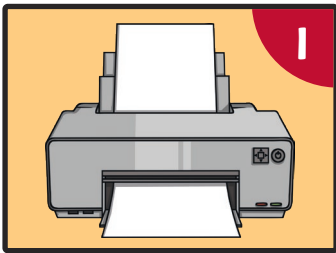
Toilet Roll Ladybird

You will need:

- Toilet paper roll
- Red poster paint
- Black paper or card (optional)
- Red card or paper (optional)
- 2 googly eyes (optional)
- Ladybird Template
- Paintbrush
- White glue (such as PVA)
- Glue spreader or brush
- Scissors
- Black felt tip



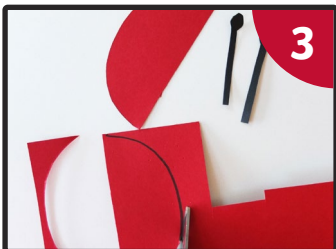
What To Do:



In preparation, print out the Ladybird Template. Or if you feel confident copying the shapes and drawing your own, you can skip this step.



Paint the outside and the top part of the inside of the toilet paper roll red. If you don't have red paint, you can wrap the toilet paper roll in red paper.



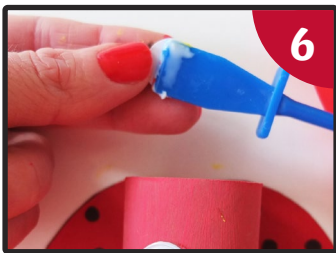
Carefully cut out the ladybird's antennae and wings from the Ladybird Template, or draw and cut your own onto card and cut them out.



Carefully cut out the black circles from the Ladybird Template and glue on to both sides of the ladybird's wings. Or you can draw your own dots with a black felt tip.



Glue the tops of wings on to the back of the tube.



Stick the googly eyes on to the front of the red tube. If you don't have googly eyes you can use the eyes from the Ladybird Template.



Draw a smile on to the ladybird's face with a black felt tip, or use the smile from the Ladybird Template.



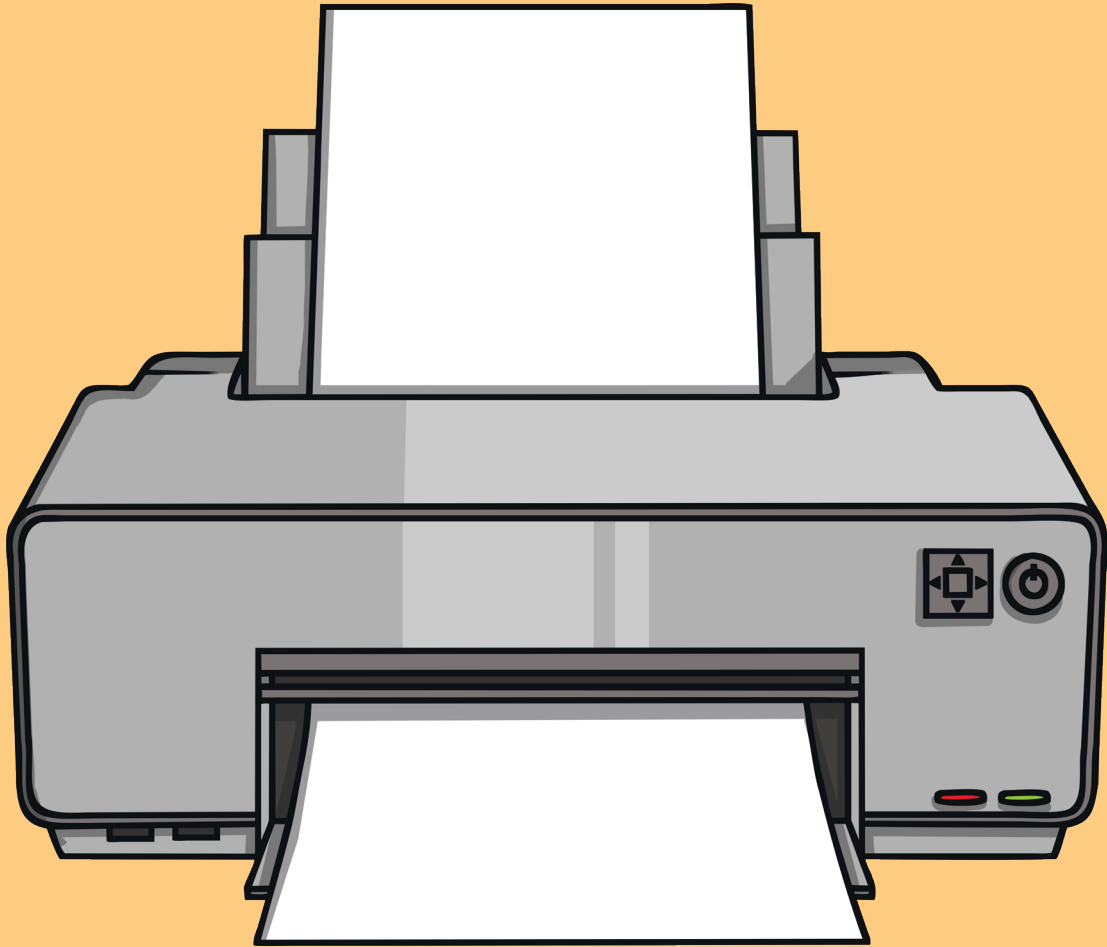
Finally, glue the ladybird's antennae in place on the top of the tube.

Toilet Roll Ladybird

You will need:

- Toilet paper roll
- Red poster paint
- Black paper or card (optional)
- Red card or paper (optional)
- 2 googly eyes (optional)
- Ladybird Template
- Paintbrush
- White glue (such as PVA)
- Glue spreader or brush
- Scissors
- Black felt tip





Step 1

In preparation, print out the Ladybird Template. Or if you feel confident copying the shapes and drawing your own, you can skip this step.



Step 2

Paint the outside and the top part of the inside of the toilet paper roll red. If you don't have red paint, you can wrap the toilet paper roll in red paper.



Step 3

Carefully cut out the ladybird's antennae and wings from the Ladybird Template, or draw and cut your own onto card and cut them out.



Step 4

Carefully cut out the black circles from the Ladybird Template and glue on to both sides of the ladybird's wings. Or you can draw your own dots with a black felt tip.



Step 5

Glue the tops of wings on to the back of the tube.



Step 6

Stick the googly eyes on to the front of the red tube. If you don't have googly eyes you can use the eyes from the Ladybird Template.



Step 7

Draw a smile on to the ladybird's face with a black felt tip, or use the smile from the Ladybird Template.



Step 8

Finally, glue the ladybird's antennae in place on the top of the tube.

